

Spellchecker for Actinic

Copywrite (C) Mole End Ltd 2002 - 2006



Index

Introduction	3
Checking the Spelling of your website	4
Actinic areas to check.....	5
Spelling options	5
Spell Checking.....	5
Spell Checking Options.....	6
Replacing Text within your website	8
Find and Replace options.....	9
Find text only.....	9
Find and Replace.....	9
Product Reports	10
Actinic Standard Reports	10
Catalog Summary	10
Catalog Detail	11
Catalogue Map Reports.....	12
Section Outline.....	12
Product Outline	13
Product Details.....	14
Product Stock Levels	15
Compact and Repair Actinic Database	16
Spelling, Printing and Export Options.....	18

Introduction

Using Spellchecker for Actinic can improve the quality and accuracy of your website, as well as saving you time updating and reviewing your website information.

The main features of Spellchecker for Actinic are

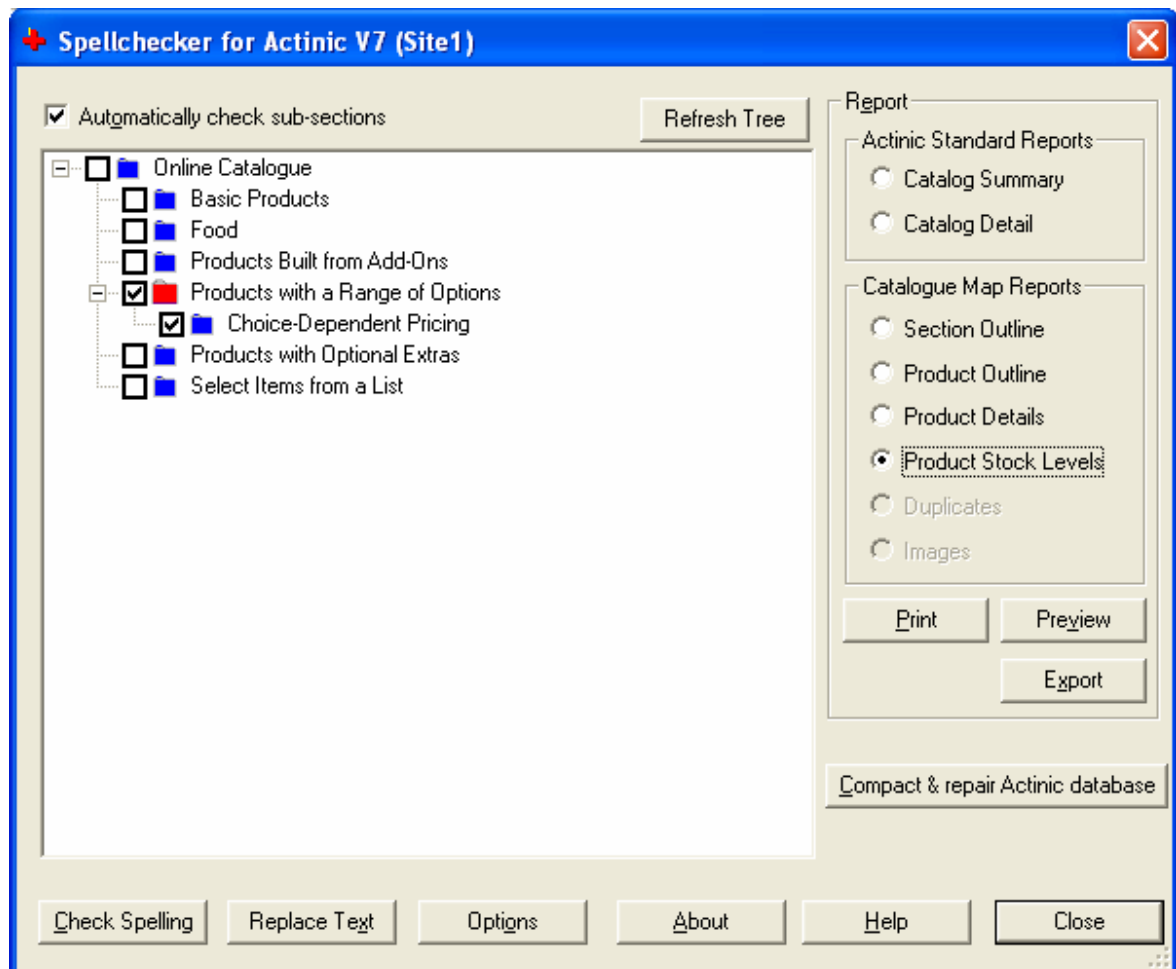
Check the spelling and major typographical errors on your website.

Find and replace words or phrases across the website.

Produce a single report of all you product details (allowing easy proof reading and price auditing).

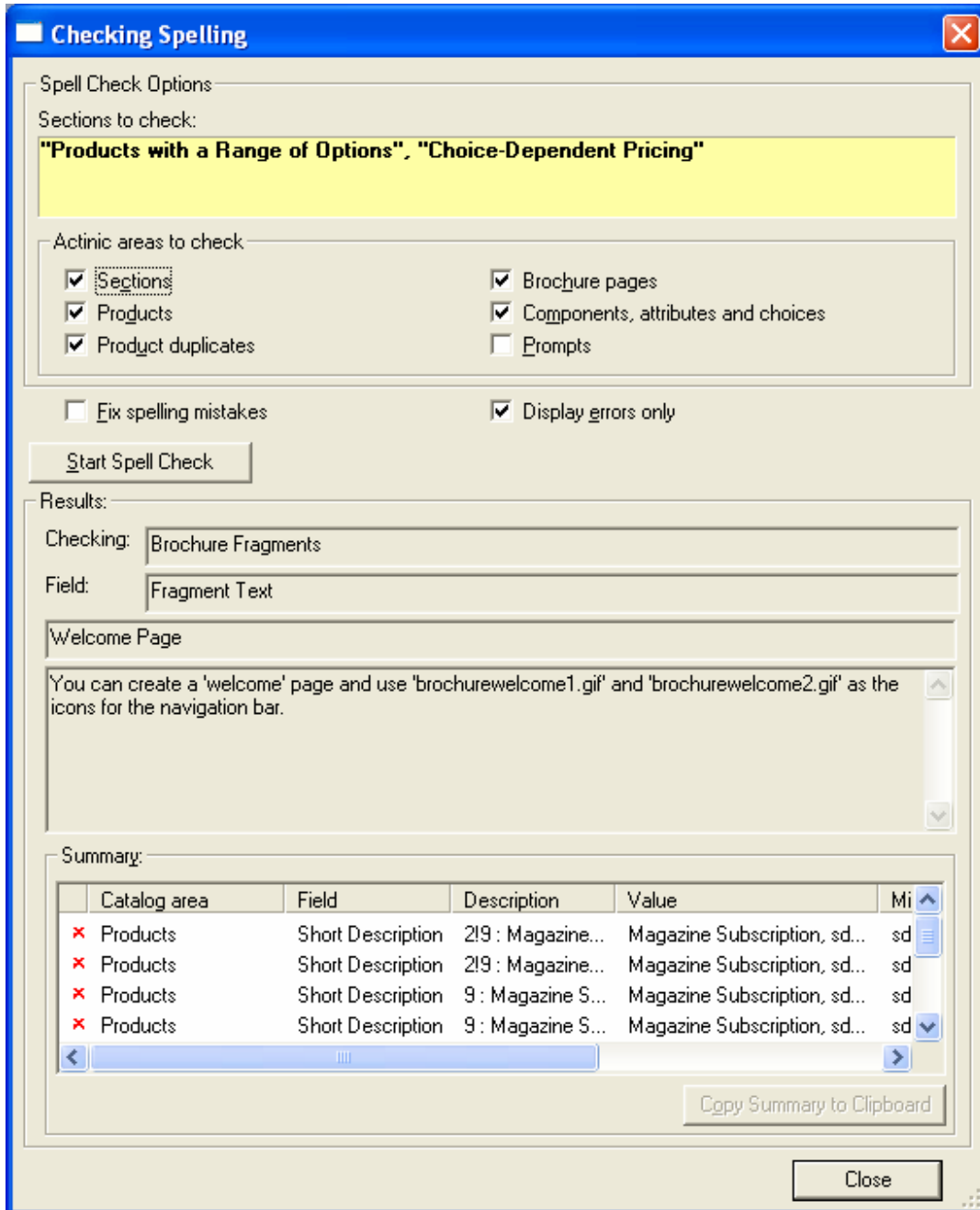
Compact and Repair your Actinic database.

Spellchecker for Actinic works with all versions of Actinic (from V4 onwards).



Checking the Spelling of your website

Select the sections that you want to include in your spelling check by selecting them in the product tree. If you want to include your entire website in the spelling check you can either tick the topmost item (Online Catalogue) or don't tick any sections. Then press the *Check Spelling* button.



Actinic areas to check

You can decide which areas of your Actinic website (Catalog) to check:

Sections

The section text and descriptions

Products

The product title and descriptions

Product Duplicates

The product duplicate information (specific to the duplicate)

Brochure pages

The brochure pages and text

Components, attributes and choices

All product selection information for the selected products (within the selected sections).

Prompts

The customisable text that Actinic provides.

Spelling options

You can decide to only show the spelling mistakes or correct them. To only show the spelling mistakes untick *Fix spelling mistakes*. You can show all areas of text checked that includes all the spelling mistakes or just the spelling mistakes. To only show the spelling mistakes untick *Display errors only*.

NOTE: You can only correct spelling mistakes in the Section descriptions in the demo. version. The full version allows all spelling mistakes to be corrected.

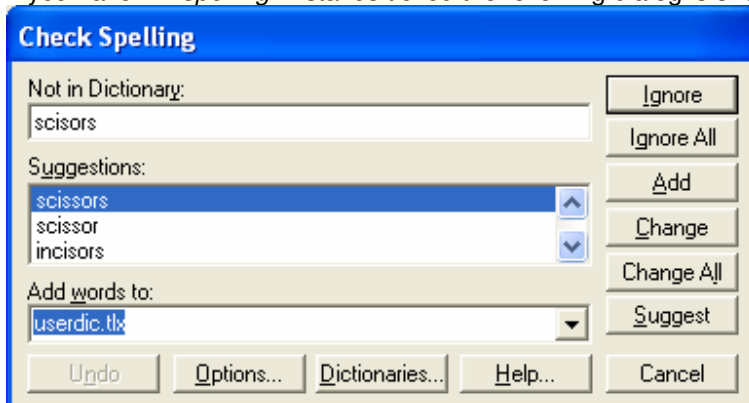
Spell Checking

Once the options have been configured you can check the spellings by pressing the *Start Spell Check* button.

If you are not fixing any spelling mistakes (i.e. *Fix spelling mistakes* is unticked). The summary area at the bottom of the dialog shows any mistakes found.

NOTE: If words are found that are correct, for example, product names, these will still be shown in the Summary section until they have been added to the supplementary dictionaries. This is explained in the following paragraphs.

If you have *Fix spelling mistakes* ticked the following dialog is shown when a spelling mistake is found.



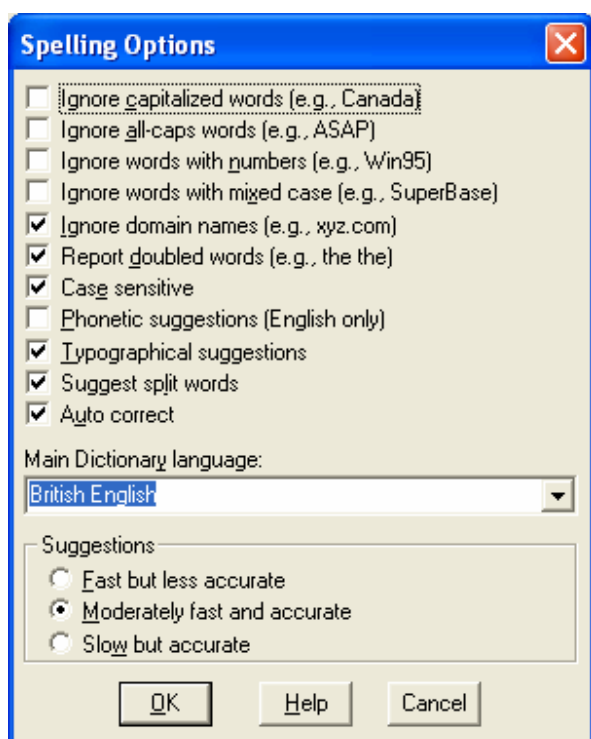
This allows you to select a suggested valid word from the list, ignore the spelling, type in your own text or add it to your local dictionary.

NOTE: Adding a word to your local dictionary will mark that word as being valid and not be a spelling mistake in the future. If you add words to your local dictionary they will no longer be shown as errors in the *Summary*. The option of being able to add words to a dictionary is also available in the demonstration version.

Spell Checking Options

From the Check Spelling dialog you can configure how you specifically want to check your website text.

Click on the options button to show the following dialog.



Ignore capitalized words (e.g. Canada)

By default, capitalised words in the middle of sentences are seen as errors. To ignore this tick this box.

Ignore all-caps words (e.g. ASAP)

By default, all capitalisations are seen as errors. To ignore this tick this box.

Ignore words with numbers (e.g. Win95)

By default, words next to numbers are seen as errors. To ignore this tick this box.

Ignore words with mixed case (e.g. SuperBase)

By default, words with mixed upper and lowercase letters are seen as errors. To ignore this tick this box.

Ignore domain name (e.g. xyz.com)

By default, all internet domains are not seen as errors.

Report doubled words (e.g. the the)

By default, the same word more than once consecutively in a sentence is seen as an error.

Case sensitive

By default, upper and lowercase spellings of words are treated separately. This means that a word can be

correct if in lowercase, but the capitalised version of the word is an error.

Phonetic suggestions (English only)

By default, phonetic suggestions are turned off. If enabled, words that are found to be misspelt are checked against words like sound like the misspelt word as well.

Typographical suggestions

By default, typographical errors are shown as possible corrections for words. Typographical errors are where the order of letters is sometimes changed around in a word due to typing error.

Suggest split words

By default, if two words are put together in a sentence without a space (and is then a spelling mistake) the suggested words list contains possible splitting of the text. For example, *thecd* would be suggested as *the cd*.

Auto correct

By default, commonly found spelling mistakes (and their corrected versions) are shown. To have a more formal spelling untick this option.

Main Dictionary language

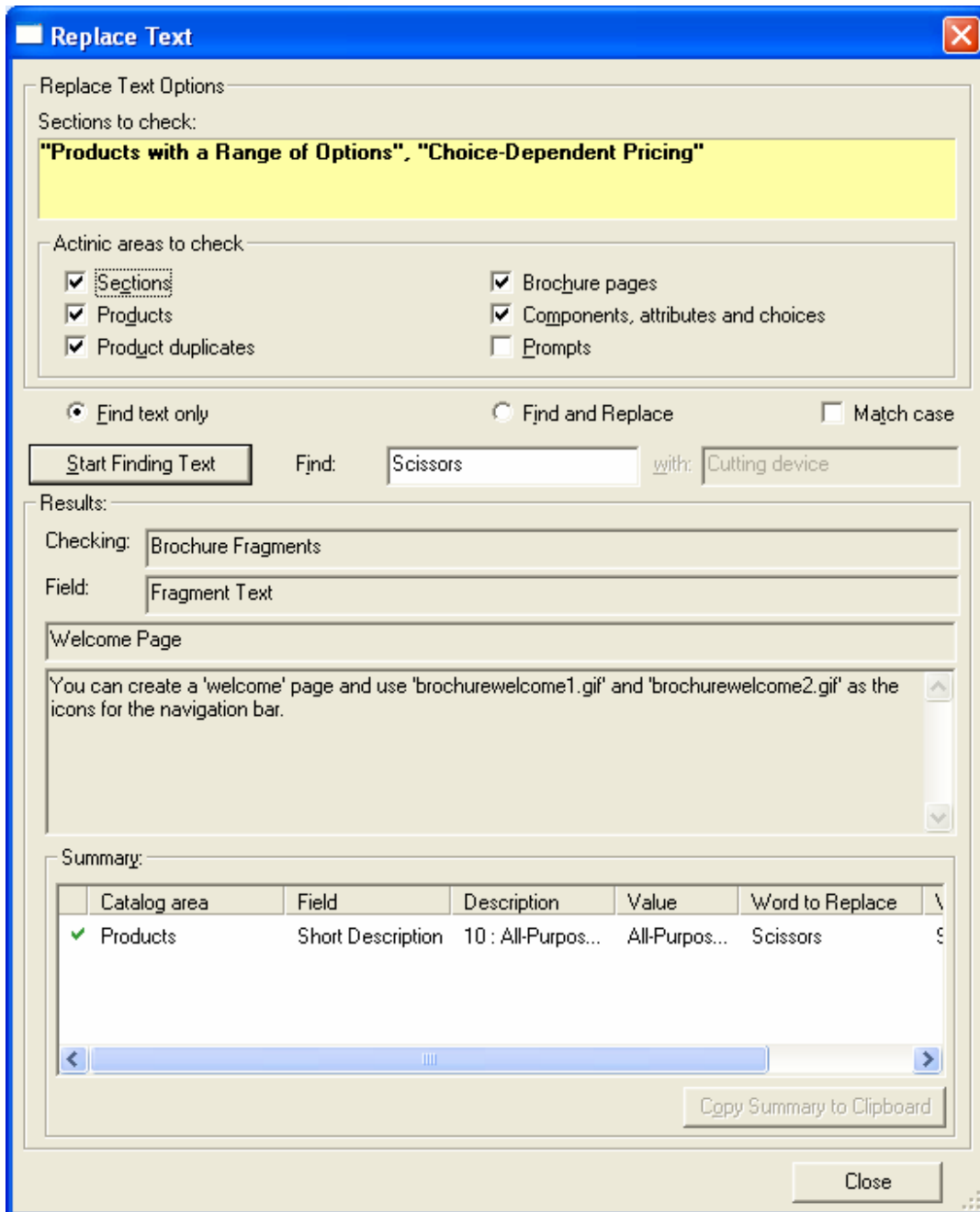
NOTE: British English dictionaries are supplied. Please contact Mole End if other languages are required.

Suggestions

You can also configure how detailed you want the suggestions (for misspelt) to be. You can have from Fast (but less accurate) to Slow (but accurate). The default is Moderate (ly fast and accurate).

Replacing Text within your website

Select the sections that you want to look for words or phrases by selecting them in the product tree. If you want to include your entire website in the Find and Replace you can either tick the topmost item (Online Catalogue) or don't tick any sections. Then press the *Replace Text* button.



Actinic areas to check

You can decide which areas of your Actinic website (Catalog) to check:

Sections

The section text and descriptions

Products

The product title and descriptions

Product Duplicates

The product duplicate information (specific to the duplicate)

Brochure pages

The brochure pages and text

Components, attributes and choices

All product selection information for the selected products (within the selected sections).

Prompts

The customisable text that Actinic provides.

Find and Replace options

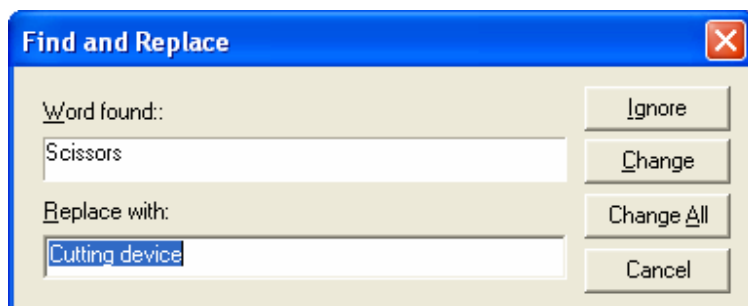
You can decide *Find* certain words or phrases or *Find and Replace* words or phrases in the selected sections (and *Actinic areas*).

Find text only

Tick the *Find text only* button and type in the word(s) to look for in the *Find* field. If you want to match the exact case of characters tick the *Match case* field. When you click on the Start Finding Text button all the areas that the text is found is shown in the *Summary* section.

Find and Replace

Tick the *Find and Replace* button and type the word(s) into the *Replace* field. Type in the word(s) to replace the found text with in the *with* field. When you click on the Start Text Replacement button the following dialog is shown:



The area of text that the word(s) are found in is shown in the main *Replace Text* dialog. You can change the text, change all occurrences found in the future or ignore this word(s) found.

You can change the text that will be used to replace the text found. If you do this any future text will be replaced with the newly type text. For example, If the text that was going to be used to replace the word *Scissors* was *Cutting device*, and *Cutting device* was re-typed as *Splicer* then if other occurrences of the word *Scissors* were found they would be (prompted) to be replaced with *Splicer*.

Product Reports

The currently selected sections (and their products) are used when you print, preview or export the reports. If you don't select (tick) any of the sections, then all sections are used.

Actinic Standard Reports Catalog Summary

Online Specialist Foods (Summary)			
Catalog:	Online Catalogue		Level 0
	Basic Products		
	Food		
	Products Built from Add-Ons		
	Products with a Range of Options		
	Products with Optional Extras		
	Select Items from a List		

Section:	Basic Products		Level 1
Parent:	Online Catalogue		
	5	Calculator	£8.51
	6	Bunch of Flowers	£21.28

Section:	Food		Level 1
Parent:	Online Catalogue		
	F021	Harvey's Original 180,68,6,5,4 Ginger Beer (330ml)	£95.00
	B155	Apple and Cream crumble	£18.00
	B152	Lemon Sparkle	£22.00

Section:	Products Built from Add-Ons		Level 1
Parent:	Online Catalogue		
	14	17 inch TFT FlatScreen	£200.00
	11	Desktop PC	Components + £300.00
	12	17 inch Monitor	£0.00
	13	19 inch Monitor	£90.00

Section:	Products with a Range of Options		Level 1
Parent:	Online Catalogue		
		Choice-Dependent Pricing	
	8	Set of Fragranced Candles	£6.81
	7	Pair of Men's Walking Boots	£42.55

Section:	Choice-Dependent Pricing		Level 2
Parent:	Products with a Range of Options		
	10	All-Purpose Scissors	Component + £10.21
	219	Magazine Subscription, sdr, sdr, 78, 89, 45	Sum of Components
	9	Magazine Subscription, sdr, sdr, 78, 89, 45	Sum of Components

Section:	Products with Optional Extras		Level 1
Parent:	Online Catalogue		
	111	Diary3	Component + £5.96
	1	Diary	Component + £5.96

This is the standard Actinic Catalogue Summary report which gives brief details of the products within your shop.

Catalogue Map Reports

Section Outline

Section Map for Online Catalogue	
Food	Food.html
Basic Products	Basic_Products.html
Products with a Range of Options	Products_With_Choices.html
Choice-Dependent Pricing	Choice_dependent_Pricing.html
Products with Optional Extras	Products_with_Optional_Extras.html
Products Built from Add-Ons	Products_Built_from_Add_Ons.html
Select Items from a List	Select_Items_from_a_List.html

Printed on 09/08/2006 at 11:07:41 Page 1 of 1

This gives you a summary of the sections and their website page names within your catalogue.

Product Outline

Catalog Map for Online Catalogue

Magazine Subscription.gdg, 8, 9, 7, 5, 4, 4, 43 (19)

Food

- Lemon Sparkle (BIS)
- Apple and Cream crumble (BIS)
- Harey's Original, 1, 80, 68, 6, 5, 4 Ginger Beer (330ml) (FCS)

Basic Products

- Calculator (5)
- Book of Flowers (5)

Products with a Range of Options

- Pair of Men's Walking Boots (7)
- Set of Fragranced Candles (5)

Choice-Dependent Pricing

- Magazine Subscription, sdt, sdt, 78, 89, 45 (219)
- Magazine Subscription, sdt, sdt, 78, 89, 45 (9)
- All-Purpose Solvents (10)

Products with Optional Extras

- Diary3 (11)
- Diary2 (21)
- Diary (1)
- Diary Inserts for Next Year (2)
- Moile (3)
- T-Shirt (4)

Products Built from Add-Ons

- Desktop PC (1)
- 17 inch Monitor (12)
- 19 inch Monitor (13)
- 17 inch TFT FlatScreen (14)

Select Items from a List

- Black Ink Cartridge (15)
- Colour Ink Cartridge (16)
- Cartridge Toner Pack (17)
- (19)
- Colour Ink Cartridge (116)

Printed on 09/08/2006 at 11:11:11 Page 1 of 1

This report shows a hierarchical list of sections and products within your shop.

Product Details

Catalog Map for Online Catalogue

Magazine Subscription, gdg, 8, 9, 7, 5, 4, 4, 43 (119)
Subscribe to our magazine for six or twelve months.

Food

Limon Sparkle (BIS2)

Apple and Cream crumble (BIS5)

Harvey's Original, d, 80, 68, 6, 5, 4 Ginger Beer (330ml) (FIZZ1)

Basic Products

Calculator (5)
This calculator features two-way power - using both batteries and solar power.

Bunch of Flowers (6)
A fine spring bouquet.

Products with a Range of Options

Pair of Men's Walking Boots (7)
Designed for walking and hiking comfort. Oiled leather uppers for superior weather resistance and non-slip sole for sure footing.

Set of Fragranced Candles (8)
Set of three candles to fragrance your home.

Choice-Dependent Pricing

Magazine Subscription, sdf, sdf, 78, 89, 45 (219)
Subscribe to our magazine for six or twelve months.

Magazine Subscription, sdf, sdf, 78, 89, 45 (9)
Subscribe to our magazine for six or twelve months.

All-Purpose Scissors (10)
Choose the colour of your scissors, and the length of the blade. Longer blades cost an extra 2.00.

This report shows you a hierarchical product report showing with product names, product references and descriptions.

Product Stock Levels

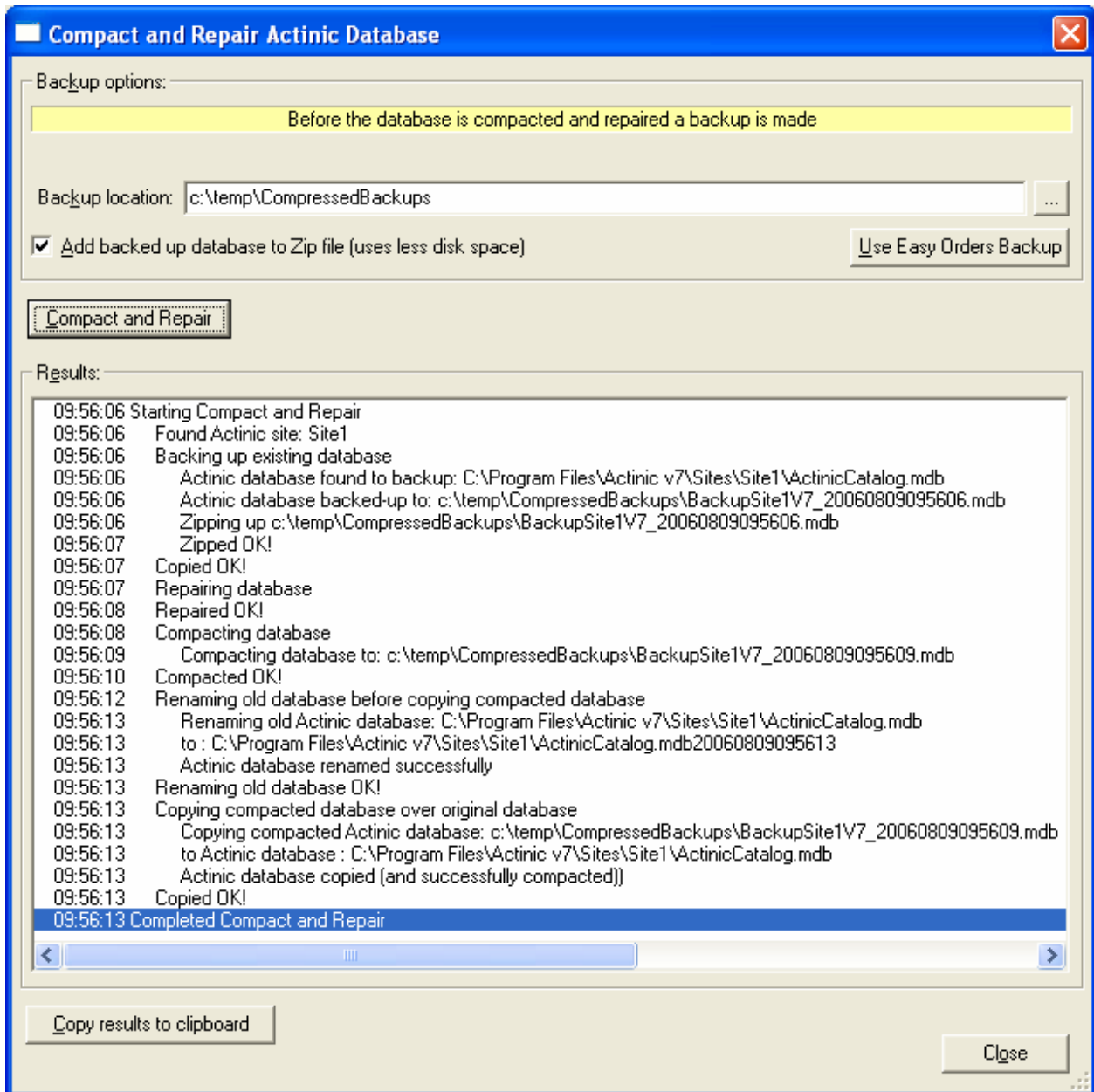
Catalog Map for Online Catalogue	
Maasagacie Subscription.gdy, 8, 9, 7, 5, 4, 4, 43 (119)	
Food	
Lemon Sparkle (BES)	
Apple and Cream crumble (BES)	
Haneys Original(1,80,68,6,5,4)Ginger Beer (330ml) (FCE)	
Basic Products	
Calculator (9)	Stock : 0
Stack of Flowers (6)	Stock : 0
Products with a Range of Options	
Pair of Men's Walking Boots (7)	Stock : 10
Set of Fragranced Candles (8)	Stock : 10
Choice-Dependent Pricing	
Magazine Subscription, sdt, sdt, 78, 89, 45 (219)	
Magazine Subscription, sdt, sdt, 78, 89, 45 (9)	
All-Purpose Solissors (10)	Stock : 10
Products with Optional Extras	
Diary3 (11)	Stock : 10
Diary2 (21)	Stock : 10
Diary (1)	Stock : 10
Diary Insert for Next Year (2)	Stock : 10
Moak (3)	Stock : 10
T-Shirt (4)	Stock : 10
Products Built from Add-Ons	
Desktop PC (1)	
17 Inch Monitor (12)	Stock : 49
19 Inch Monitor (13)	Stock : 10
17 Inch TFT FlatScreen (14)	Stock : 10
Select Items from a List	
Black Ink Cartridge (15)	Stock : 42
Colour Ink Cartridge (16)	Stock : 70
Cartridge Tink Pack (17)	
(19)	
Colour Ink Cartridge (116)	Stock : 70

This report shows the current stock levels of all products within your shop.

Compact and Repair Actinic Database

There may be times when you can't start Actinic to repair your database or you may want an easy way to create backups and keep your Actinic database performing as efficiently as possible.

You can do this using this dialog. Click on the Compact & Repair Actinic database button.



To compact and repair your Actinic database click on the *Compact and Repair* button. The following tasks are performed on your database.

Backup

A backup of the existing database is made. You can choose to store the backup with in a ZIP file (which is normally 10% of the size of the original database). The name of the backup file is based upon the Actinic version, site name and the current time and date (including seconds). This task must be done before a database can be compacted and repaired. If you want more comprehensive backups done click on the *Use Easy Orders Backup* button.

Repair

The database tables, indices are checked and any problems fixed.

Compaction

All the information from your existing database is read and rewritten to a new database with all the information in the most efficient order. Over time, as new orders and products are created the speed of Actinic will slow down; after a database is compacted it will improve the speed of Actinic.

Renaming of existing Actinic database

The existing database is renamed before it is replaced with the compacted version. This makes sure that no other programs are accessing (or can access) the database while it is replaced.

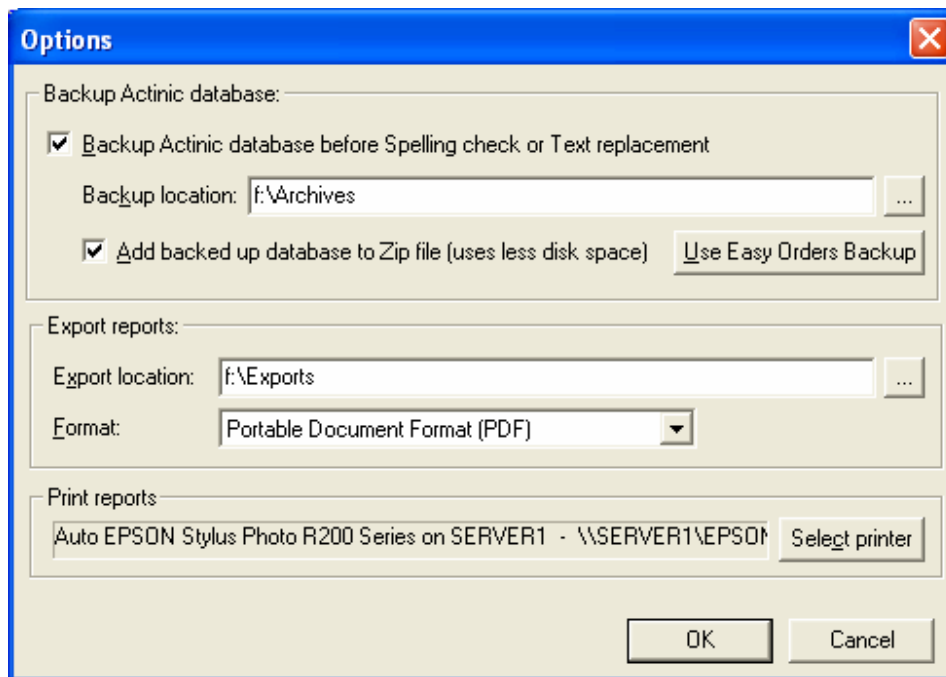
Copying of compacted database over existing database

Once the new compacted database has been created it will replace your existing database.

NOTE: You will still have a copy of your database before these tasks are run in your Backup location.

Spelling, Printing and Export Options

To configure the options for Printing, Export and Spelling backups click on the *Options* button.



Backup Actinic database

Before you Spell Check or Replace any text in your Actinic database it is a good idea to backup the existing data. After setting these options up you are still asked if you want to backup the database, so if you are doing multiple spell checks or text replacements you only need to backup the database the first time (if you want to restore your database back to its original settings).

When you backup your database you can choose to put the database into a ZIP file. This take sup about 10% of the space of the unzipped database. If leave this field blank or use the default value (of '.') the reports are backed up to the installation location (e.g. *C:\Program Files\MoleEnd\HealthCheck\V8*).

Export reports

When you export reports you can choose the format to store them, PDF, RTF or XML. You should select the location to store the exported reports. If leave this field blank or use the default value (of '.') the reports are exported to the installation location (e.g. *C:\Program Files\MoleEnd\HealthCheck\V8*).

Print reports

You can choose the specific printer to send the reports to. By default the reports are printed to your Windows default printer.